



# So Many Euros

The Software for Euro Coin Collectors

## Migration Guide

Version 5 – September 2019

---

# Table of Contents

<b>1</b>	<b>ABOUT THIS MIGRATION GUIDE .....</b>	<b>3</b>
<b>2</b>	<b>MIGRATION - OVERVIEW .....</b>	<b>4</b>
<b>3</b>	<b>MIGRATION – STEP BY STEP .....</b>	<b>5</b>
<b>3.1</b>	<b>STEP 1: BACKUP YOUR COLLECTION FILES FROM THE OLD PROGRAM VERSION.....</b>	<b>5</b>
<b>3.2</b>	<b>STEP 2: INSTALL SME 5.....</b>	<b>5</b>
<b>3.3</b>	<b>STEP 3: REGISTER AND CONFIGURE SME 5.....</b>	<b>6</b>
<b>3.4</b>	<b>STEP 4: OPEN &amp; SAVE THE COLLECTION FILES IN SME 5 .....</b>	<b>9</b>
<b>3.5</b>	<b>OPTIONAL STEP 5: REMOVE THE OLD PROGRAM VERSION.....</b>	<b>10</b>
<b>4</b>	<b>APPENDIX .....</b>	<b>11</b>
<b>4.1</b>	<b>LIMITATIONS OF THE MIGRATION .....</b>	<b>11</b>
<b>4.2</b>	<b>FEATURES COMPARED .....</b>	<b>11</b>

---


# 1 About this Migration Guide

Welcome to the **SME 5** migration guide. This document will explain how to migrate your collection data from old program versions to the new **SME 5** version.

Please note: For easy understanding all names of elements of the graphical user interface, e.g. dialogs, tabs, labels etc., are printed in *italics* within this document.

To easy differentiate between both program versions, the old program version will be called **So Many Euros 4** in this document and the new one **SME 5**.

Other languages:

 Es ist auch eine Migrationsanleitung in Deutsch verfügbar. Diese können Sie von der Homepage über den folgenden Link herunterladen:

[https://www.somany.de/download/sme5/sme5\\_Migrationsanleitung\\_DE.pdf](https://www.somany.de/download/sme5/sme5_Migrationsanleitung_DE.pdf)

---

## 2 Migration - Overview

The migration from old **So Many Euros 4** versions to the new **SME 5** version is easy.

These are the necessary steps:

- Backup your collection files from the old program version.
- Install **SME 5**.
- Register and configure **SME 5**.
- Open and save the files in **SME 5**.
- Optional: Remove the old program version.

In the following section the steps are described in detail.

---

## 3 Migration – Step by Step

ATTENTION: Please note that the new program version is not available for 32 Bit Windows systems. If you are currently using a 32 Bit Windows system, you cannot install the new program version.

---

### 3.1 Step 1: Backup Your Collection Files from the old Program Version

Please follow these step by step instructions:

- a) Create a new folder in which you want to store the backup copies. DON'T place this folder in the "Program Files" folder.  
For this guide we will assume the folder is "C:\MySmeFiles".
- b) Start **So Many Euros 4** and click on *Settings* on the *So Many Euros - Deluxe Edition* tab.
- c) In the *Settings* dialog please click on *Change directory*.
- d) In the *Change Directory* dialog make yourself a note of the currently used folder. Then choose the folder you have created in step a) and click on *OK*.
- e) In the upcoming message box click on *OK*.
- f) Again click on *Change directory* and choose the original folder you noted in step d). Click on *OK*.
- g) In the upcoming message box choose *No*.

---

### 3.2 Step 2: Install SME 5

Download the installation package from the SME homepage and unzip the archive. Click on `sme_setup.exe` to start the installation.

Important notes:

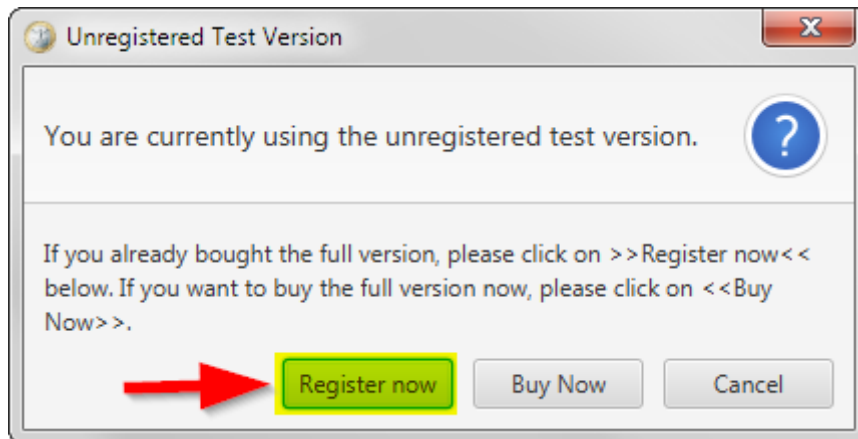
- Choose a different installation folder than with the old program version. Do not install the new version "over" the old version.
- If ever possible, do not install the new version in the "Program Files" folder (or "Program Files (x86)") or a subfolder of this folder because this will cause problems with the Windows virtualisation feature. (If you cannot avoid installing in the "Program Files" folder, please make sure to always start the program by double-clicking on "sme\_as\_admin.exe".)

When the installation is finished, start **SME 5**.

---

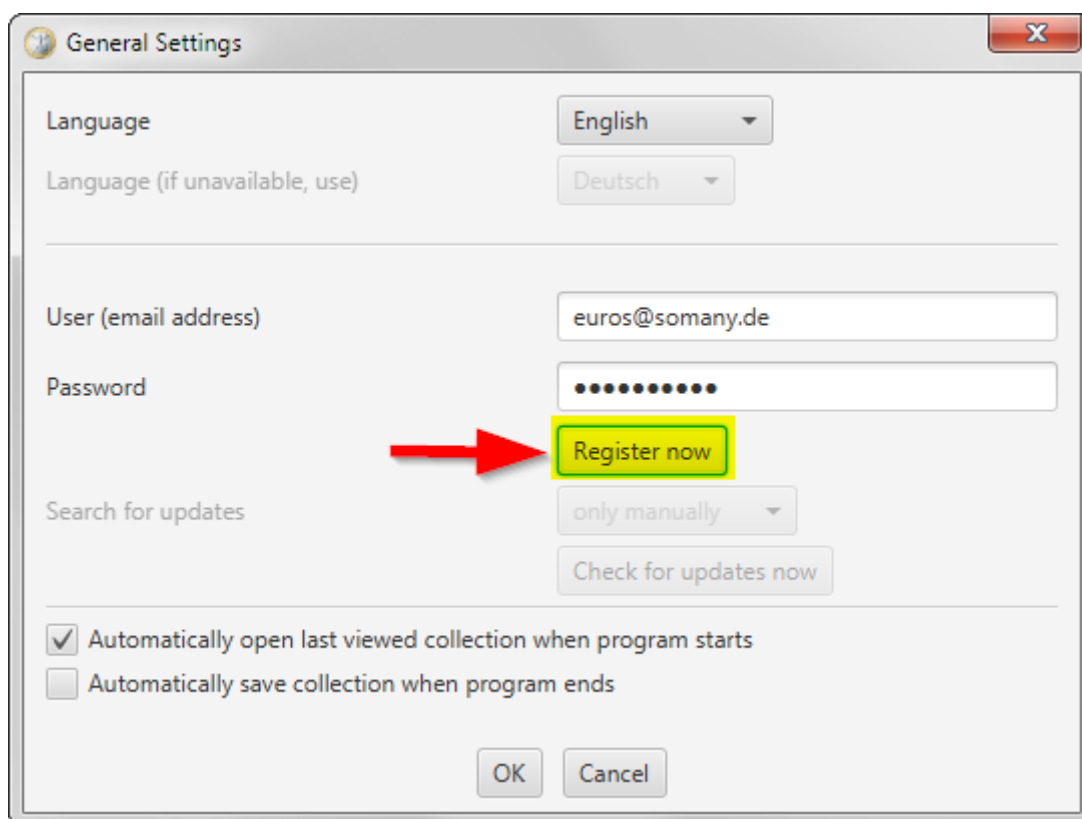
### 3.3 Step 3: Register and Configure SME 5

When the program is started for the first time, a dialog will pop up automatically. Click on *Register Now* to open the *General Settings* dialog.

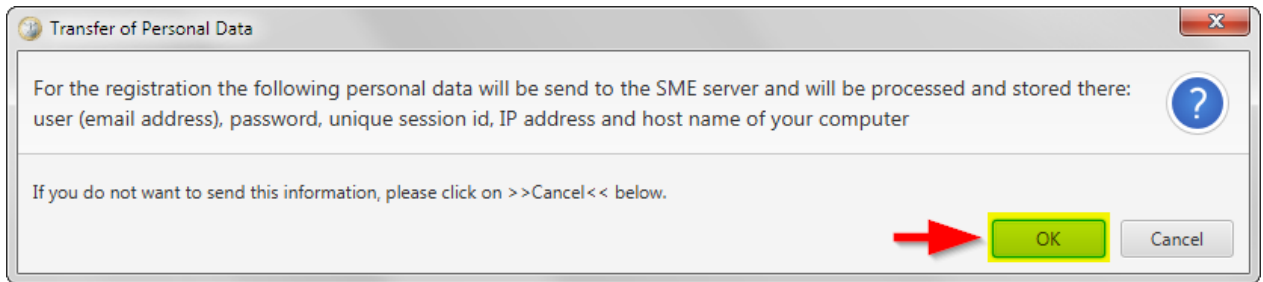


If the first dialog did not pop up, please choose *Settings -> General* from the menu. In the *General Settings* dialog choose your desired language and a second language (English or German) which should be used if a translation is not available in the desired language.

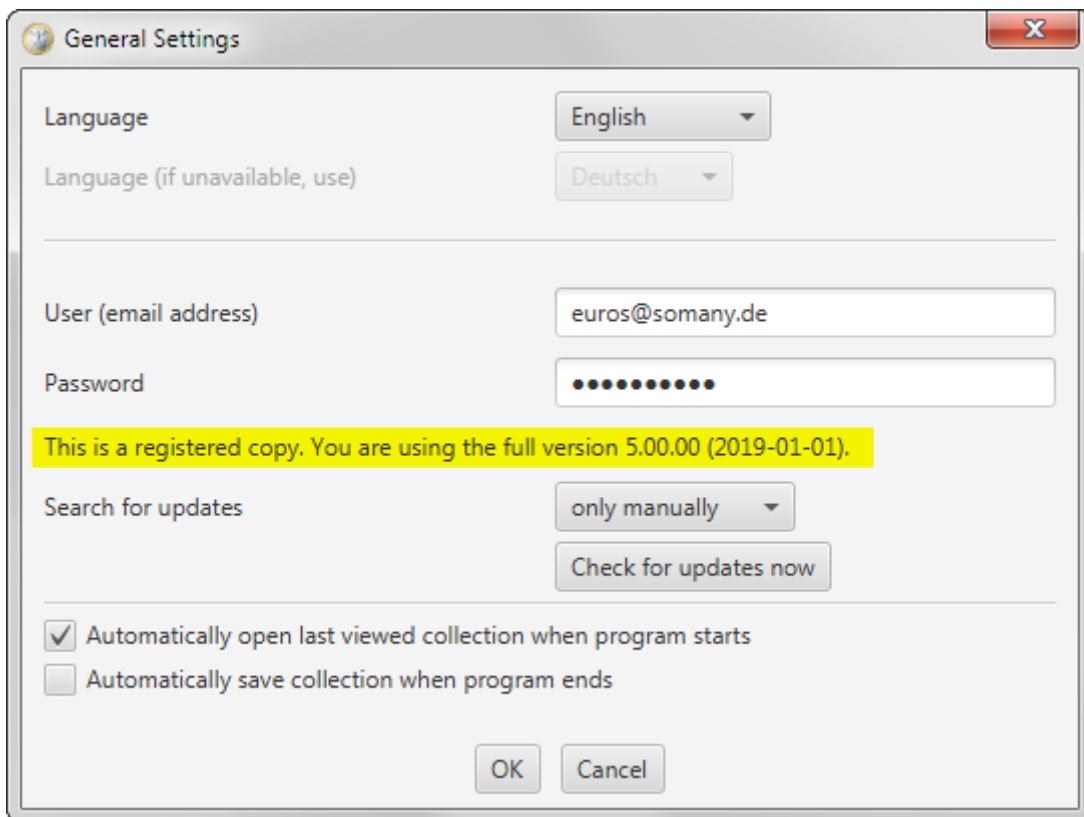
In the *User (email address)* and *Password* fields please enter the log-in credentials from the download area. Then click on *Register now*.



Confirm in the next dialog that you really want to register by clicking on OK.

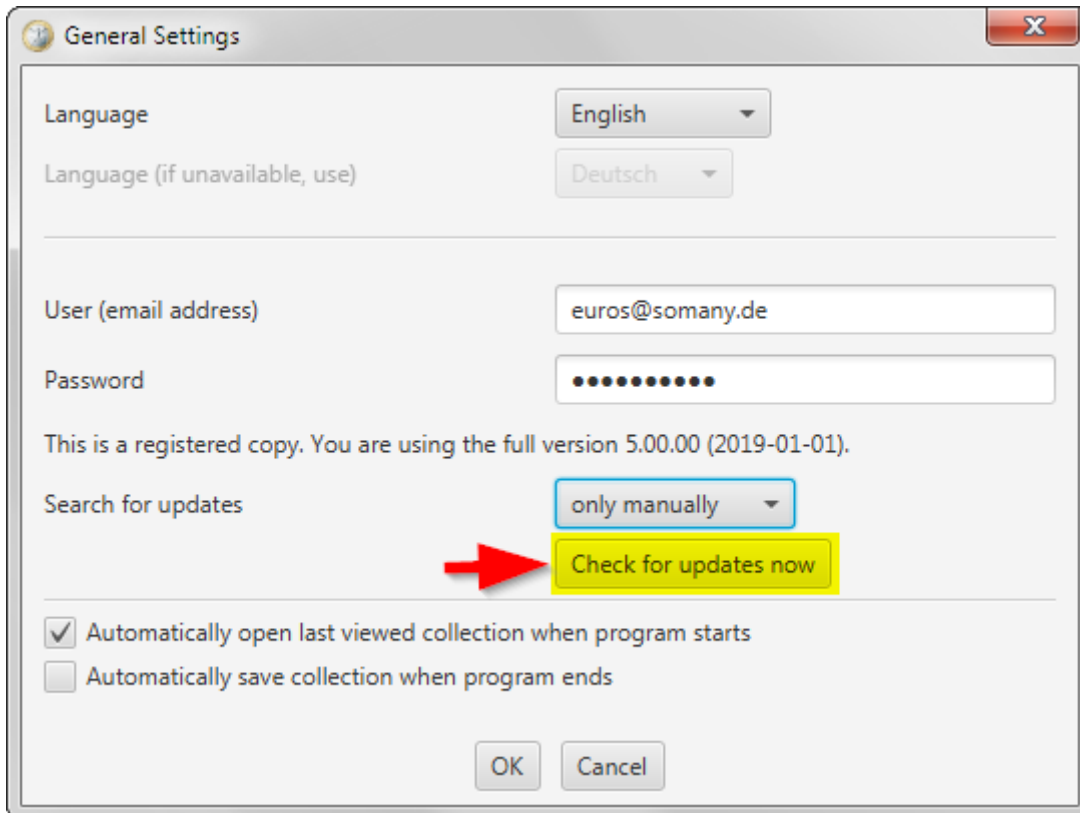


After a few seconds the successful registration will be confirmed in the *General Settings* dialog:

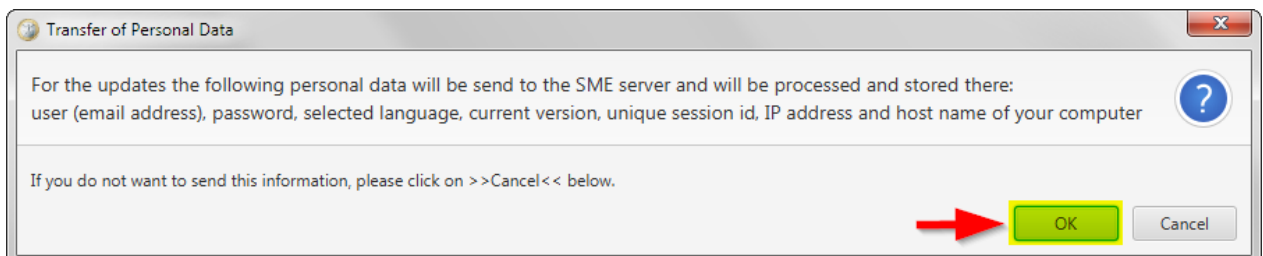


Now the controls in the *Search for updates* area are enabled. Select your desired frequency for updates.

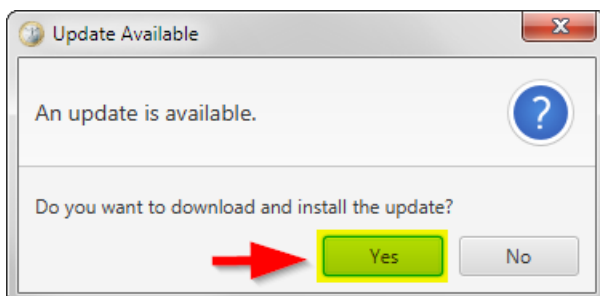
To complete the configuration click on *Check for updates now*.



Again, you need to confirm that you want to proceed by clicking on *OK*.



If an update is available, confirm that it should be installed by clicking on *Yes*. If no update is available, click on *OK* in the information dialog and proceed with the next chapter.



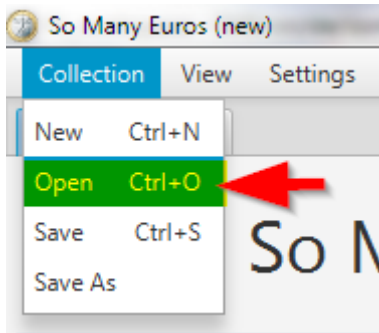
Please follow the instructions in the update dialogs. Depending on the type of update the program may automatically terminate and you will have to restart it manually.



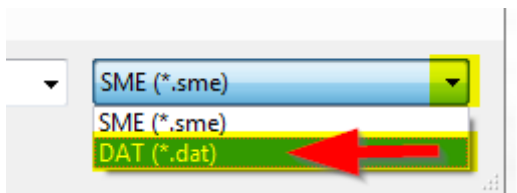
---

## 3.4 Step 4: Open & Save the Collection Files in SME 5

From the *Collection* menu choose *Open* or use the shortcut Ctrl+O.



From the file type selection list in the lower right corner of the *Open Collection* dialog choose the type *DAT (\*.dat)*.



Navigate to the backup folder you have created in step 1 (C:\MySmeFiles), select the sme\_user.dat file and click on *Open*.

The program will automatically convert the old collection file into a new collection file with .sme file extension and save it in the same folder (C:\MySmeFiles). If you prefer to have the new file in another folder, choose *Save As* from the *Collection* menu.

You are done! Welcome to **SME 5**.

If you created multiple collections in **So Many Euros 4**, please repeat step 4 for all sme\_user...dat files from your backup folder.

---

## 3.5 Optional Step 5: Remove the old Program Version

If the migration to **SME 5** was successful and you do not want to use **So Many Euros 4** any longer, you can remove the old program version. To do this, please choose *So Many Euros Uninstall* from the *Start* menu or start `Uninstall.exe` from the old installation folder.

---

## 4 Appendix

### 4.1 Limitations of the Migration

Please note the following limitations of the migration:

- Collections from very old program versions (before 1.4.0) cannot be migrated.
- The notes from the country tabs will not be migrated.
- The notes from the *So Many Euros - Deluxe Edition* tab will not be migrated.
- The changes tracking counters (e.g. how many new coins were entered in the last month) will not be migrated.

---

### 4.2 Features Compared

Some features of the old **So Many Euros 4** version will no longer be available in **SME 5** or will be handled differently. The following table shows these changes:

Feature in So Many Euros 4	... in SME 5
General information texts on the <i>So Many Euros - Deluxe Edition</i> tab	Not available
Notes on the <i>So Many Euros - Deluxe Edition</i> tab	Not available
Notes on the country tabs	Available since version 5.01.00.
<i>Change Directory</i> function	Use the <i>New/Open/Save</i> items from the <i>Collection</i> menu
Catalog numbers in the coin input dialog	Not available
Report <i>Statistic Report</i>	Statistic tables on all <i>Overview</i> tabs
Report <i>"Inventory" List</i>	Statistic tables on all <i>Overview</i> tabs Report <i>"Inventory" List</i> available since version 5.01.00.
Reports as HTML or BBCode	Not available
<i>Print</i> function for reports	Not available. Use <i>Save As</i> or <i>Clipboard</i> and open the report in an editor or in Word and use the print function of that tool.